



Jungle Contact Book

COP-4331 Summer 2025

Group 3

Our Team



Vance Algeria

Front End



Ifunanya Eke

Front End



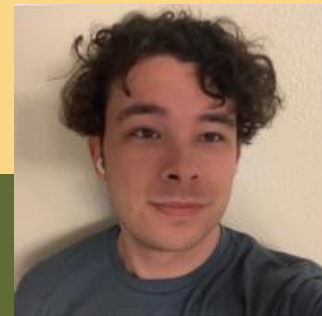
Melvin Joseph
Louie Arul

API/Database



Christian
Morton

API/Database



Colton
Santiago

Project Manager

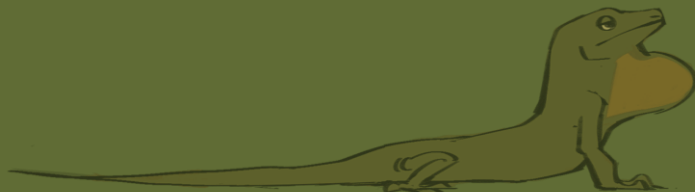
Project Manager

- Coordinate meetings, communication
 - Use Google Docs to organize meeting topics
 - Create/manage discord server
- Create models, diagrams, presentation
 - Help to describe systems to others
- Keep gantt up to date

Meeting 1 - 5/15

- Determine roles (Project Manager, Front End, API, Database) typed into google sheets
 - Colton - Project Manager
 - Ifunanya - Front End
 - Vance - Front End
 - Melvin - API/Database
 - Christian - API/Database
- Determine web app theme (draw a model?)
 - Make basic functionality first, then start designing (front end in charge)
- Make GitHub repository (Vance created one, added us to it)
- Starting next week: Fridays at 1pm through discord, Wednesdays at 2:30pm in Library (Reserve when available)

Front End



- Functionality of client side
- Make sure users can use and understand the website easily
 - Simple, intuitive design
- Design the website's art and layout

LOGIN REGISTER

Please Log In

Username

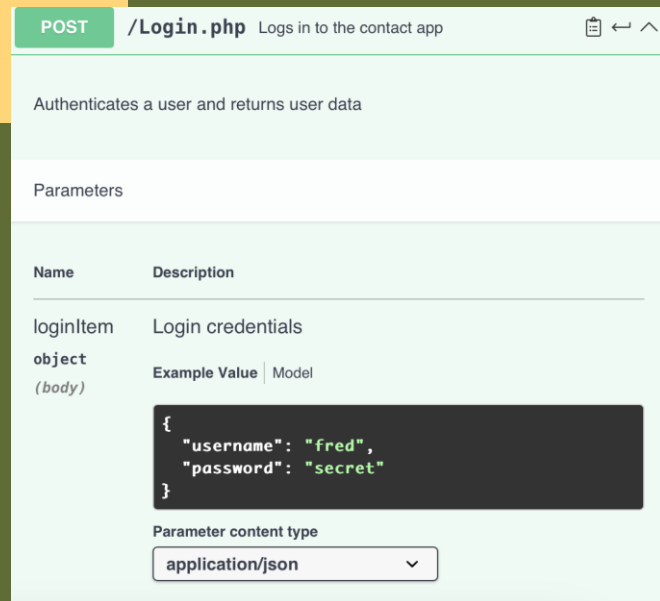
Password

Show Password

LOGIN

API/Database

- Communication between the website and database
- Keep information in the database, maintain privacy
 - Private info stays private
- Test endpoints in Swaggerhub



POST **/Login.php** Logs in to the contact app

Authenticates a user and returns user data

Parameters

Name	Description
loginItem object (body)	Login credentials

Example Value | Model

```
{  
  "username": "fred",  
  "password": "secret"  
}
```

Parameter content type

application/json

Tools Used

- Digital Ocean
- GoDaddy
- Github
- Discord
- Postman
- MySql
- GanttPro
- Google Docs, Slides
- Lucidchart



Color Palette

#FFF4DB



#FAD687



#C56800



#696C35



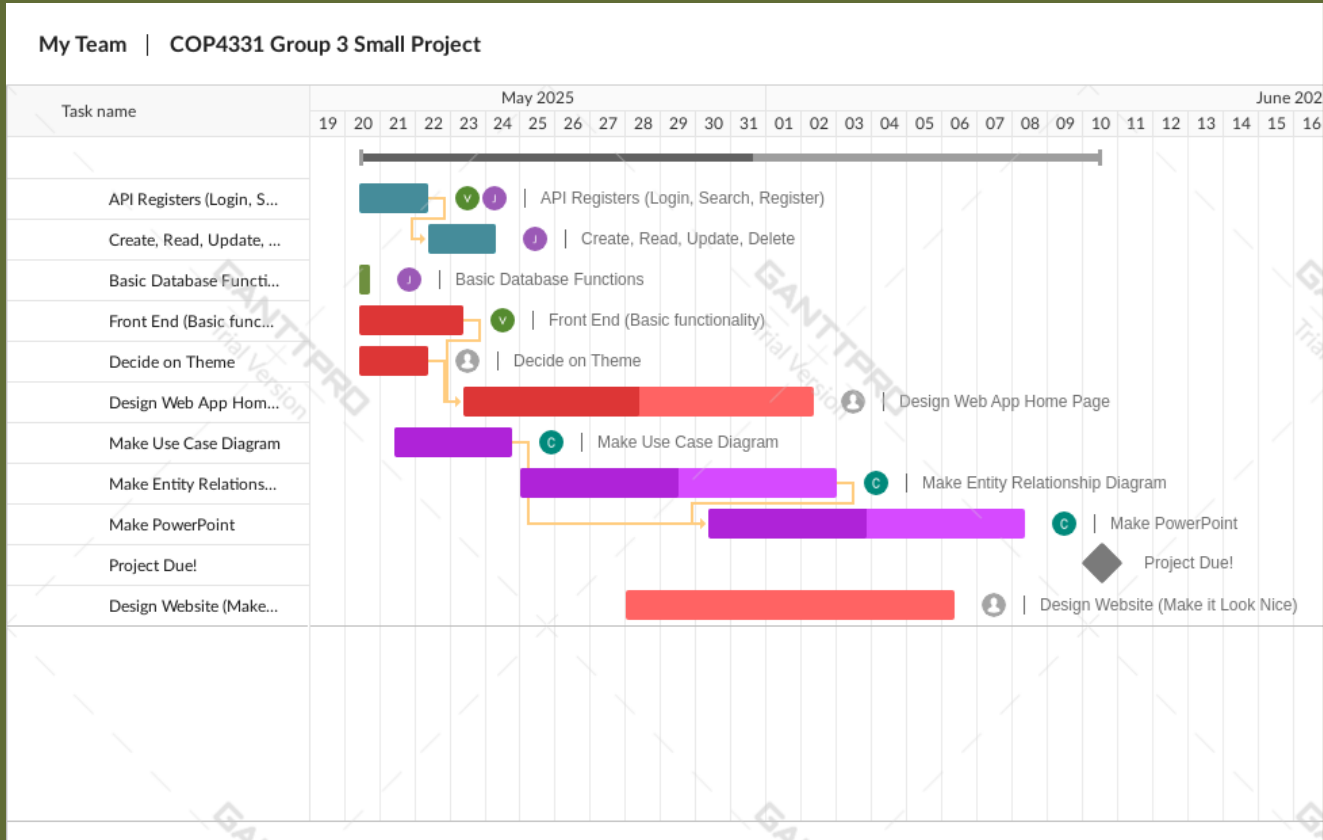
#476045



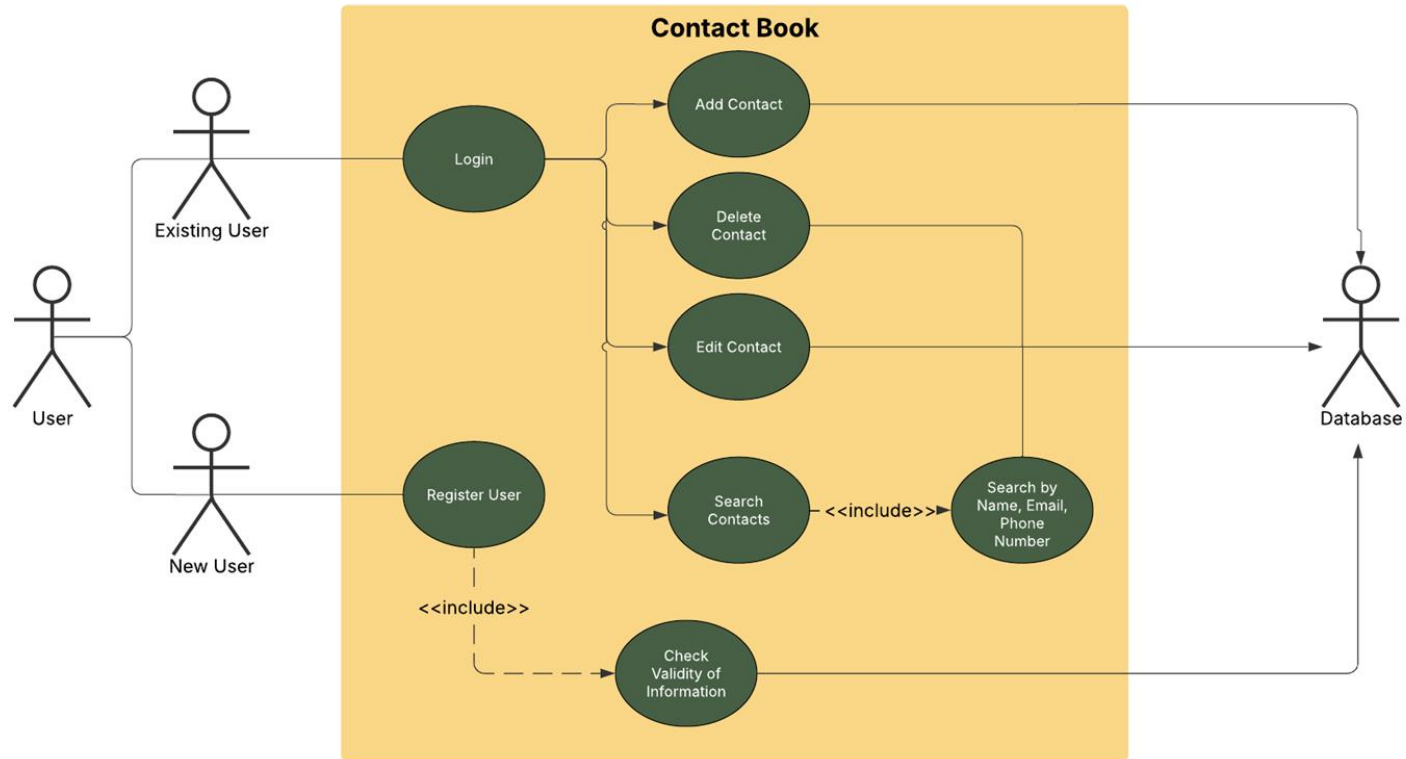
#000000



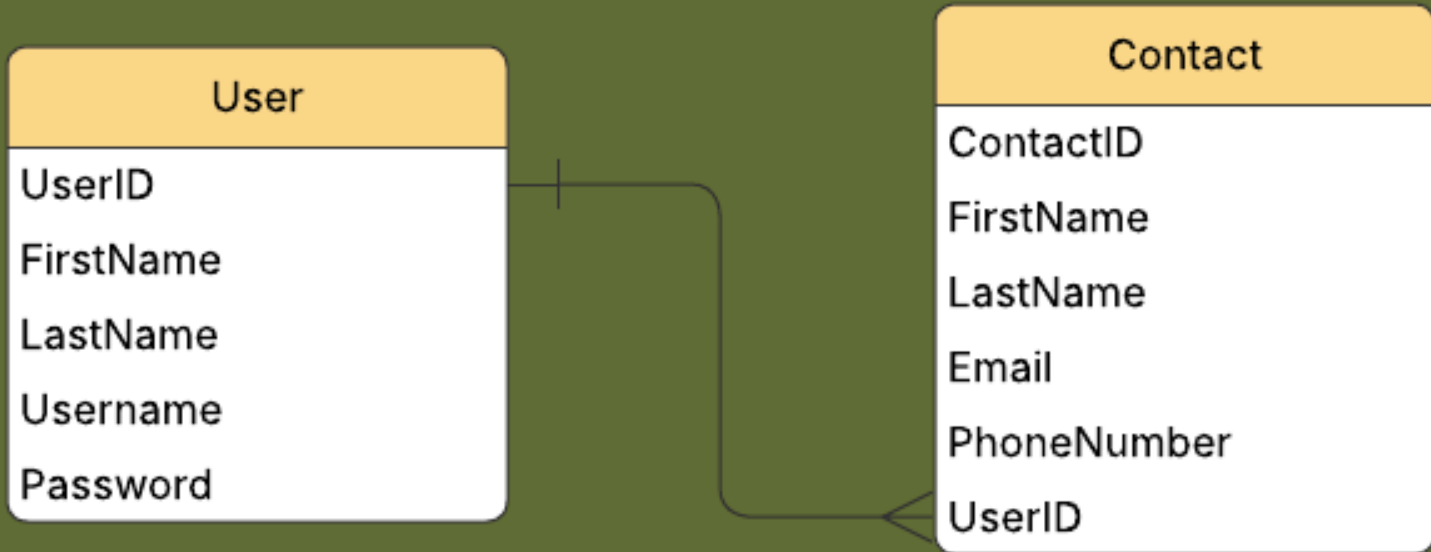
Gantt Chart



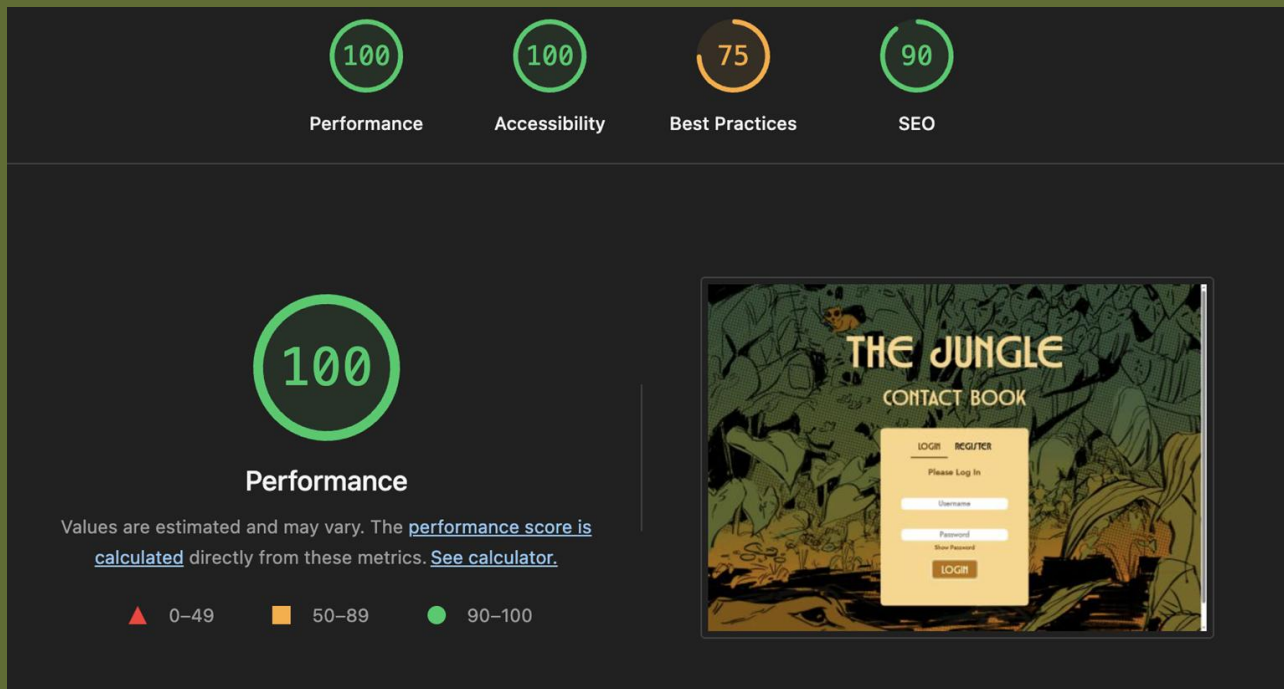
Use Case Diagram



ERD



Lighthouse Score



(75% due to lack of HTTPS)



What Went Well

- Loading sets of contacts
- Assigning roles
- Keeping track of progress



What Went Worse

- Gantt chart impact
- Adding a refresh button
- Aligning elements with css

Website Demo

[Website Link](#)

[Video Demo](#)

API Endpoints Demo

[Swaggerhub Link](#)

[Video Demo](#)

Questions?

